



RANDALL ROAD at US ROUTE 20
KANE COUNTY PLANNING AND ENVIRONMENTAL LINKAGES STUDY

**Thank you for joining us!
The meeting will begin at 6PM.**

**This meeting will be recorded
and available on the County
website after tonight's
meeting.**





RANDALL ROAD at US ROUTE 20
KANE COUNTY PLANNING AND ENVIRONMENTAL LINKAGES STUDY

Virtual Public Information Meeting #2

November 17, 2021
6:00PM – 7:30PM



Agenda

1. Introductions

2. Project Progress

3. Public Meeting #1 Recap

4. Purpose & Need

5. Potential Concepts

6. Breakout Sessions & Comments

7. Next Steps

How to Submit a Comment



RANDALL ROAD at US ROUTE 20
KANE COUNTY PLANNING AND
ENVIRONMENTAL LINKAGES STUDY

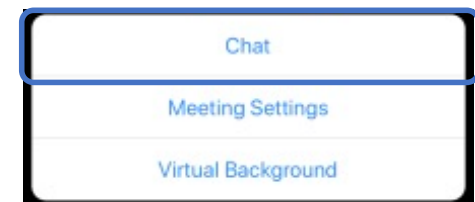


We Value Your Feedback!

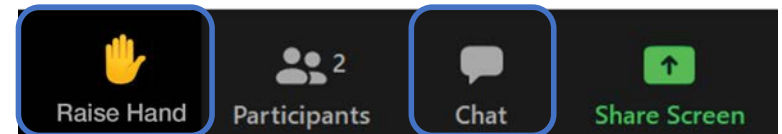
Click the chat icon at the bottom of your screen to provide feedback and ask questions.

Other ways to provide comments:

- <http://kdot.countyofkane.org>
- Jennifer O'Connell:
oconnelljennifer@co.kane.il.us



Mobile view



Computer view

This meeting is being recorded

Virtual Meeting Overview

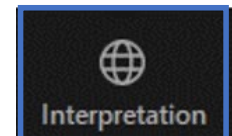


RANDALL ROAD at US ROUTE 20
KANE COUNTY PLANNING AND
ENVIRONMENTAL LINKAGES STUDY

Audio de la presentación en español

Para escuchar al intérprete en español usted debe ingresar a la reunión a través del webinar de Zoom, no a través por teléfono.

1. Busque el icono de interpretación en la barra de webinar de Zoom. Le mostramos el icono en esta diapositiva para ayudar a reconocerlo.
2. Haga clic en el icono y seleccione "Spanish" para escuchar al intérprete en la reunión.





RANDALL ROAD at US ROUTE 20
**KANE COUNTY PLANNING AND
ENVIRONMENTAL LINKAGES STUDY**

Introductions

Introductions: Project Partners



Introductions: Project Team



Jennifer O'Connell



Steve Pasinski



Jessica Carroll



Gina Murphy



Kim Jarosz



Tammy
Wierciak



Kristen
Robinson

Polling

In which community do you live?

Please type your response in the chat.





RANDALL ROAD at US ROUTE 20
**KANE COUNTY PLANNING AND
ENVIRONMENTAL LINKAGES STUDY**

Project Progress



Project Timeline



+ = Public Meeting

Project Study Area

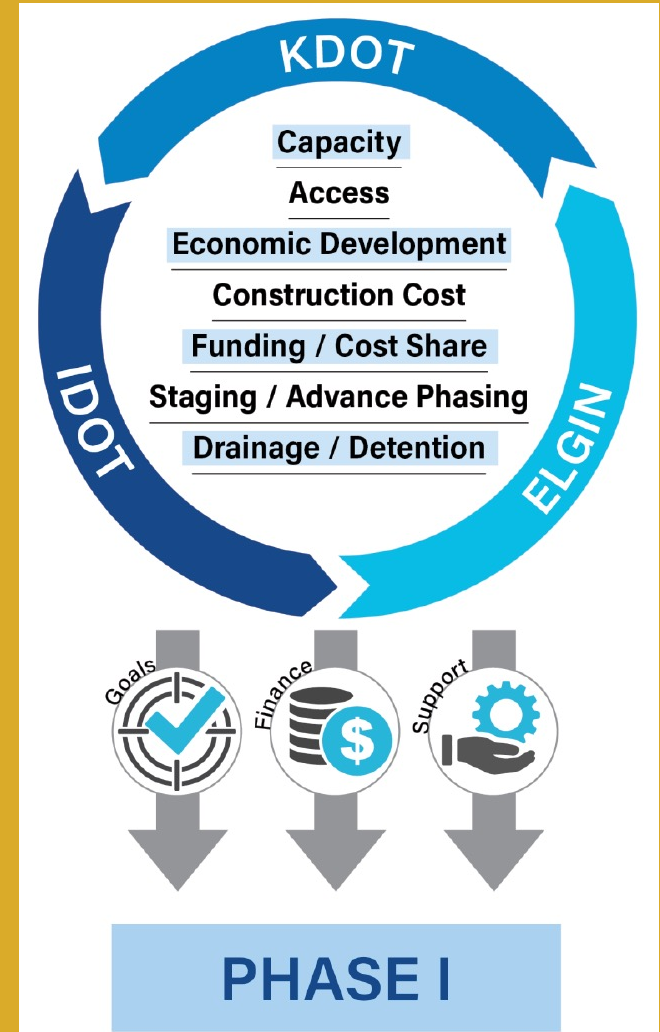


TRAFFIC IS
ANTICIPATED
TO INCREASE
40% FROM
2020 TO 2050



Project Goals

- Improved safety for all users
- Enhanced mobility for all users
- Improved access for all users
- Upgraded connectivity and accommodations for bicyclists and pedestrians
- Modernized, reconstructed roadway
- Shared project vision



Related Studies



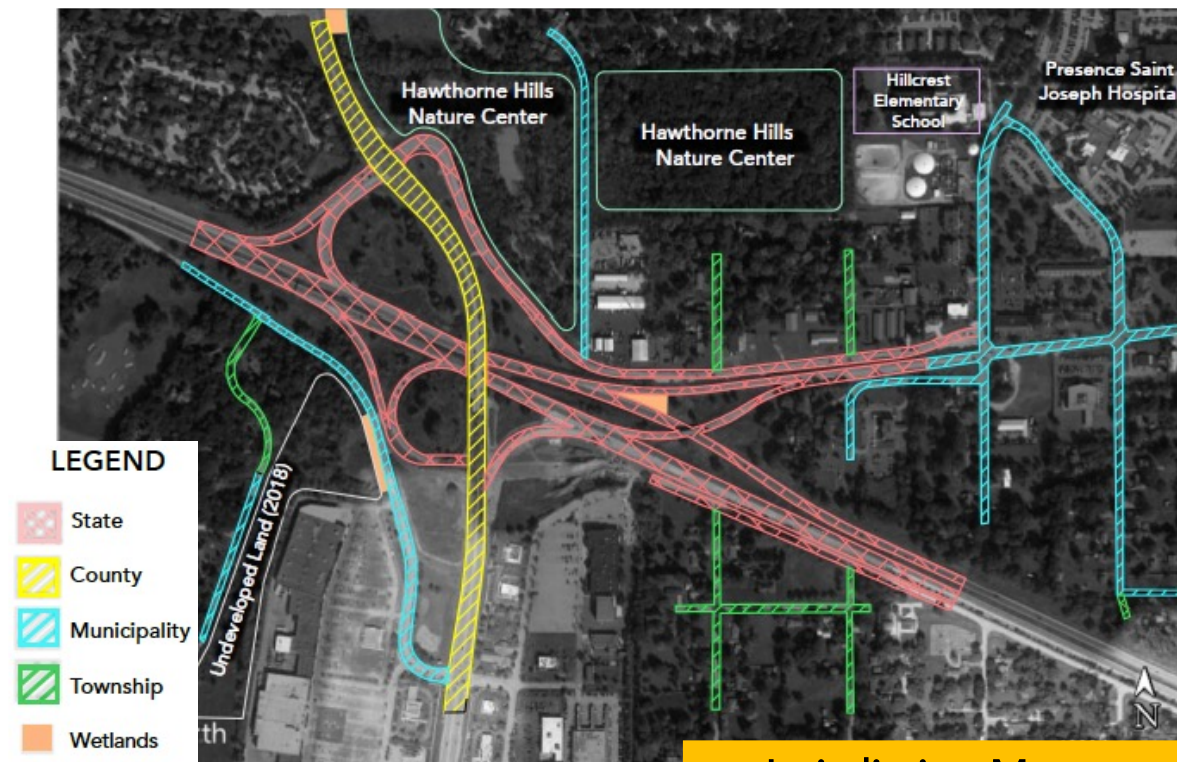
RANDALL ROAD at US ROUTE 20
KANE COUNTY PLANNING AND
ENVIRONMENTAL LINKAGES STUDY



- Randall Road at Weld & US 20



- US 20 from Shales Parkway to Nesler Road (Corridor Study)





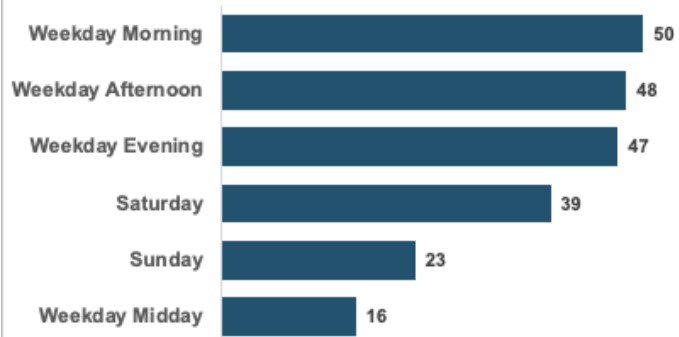
RANDALL ROAD at US ROUTE 20
**KANE COUNTY PLANNING AND
ENVIRONMENTAL LINKAGES STUDY**

Public Meeting #1 Recap

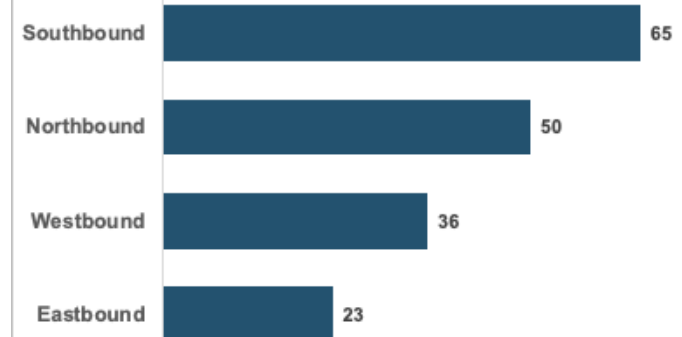
What We Heard



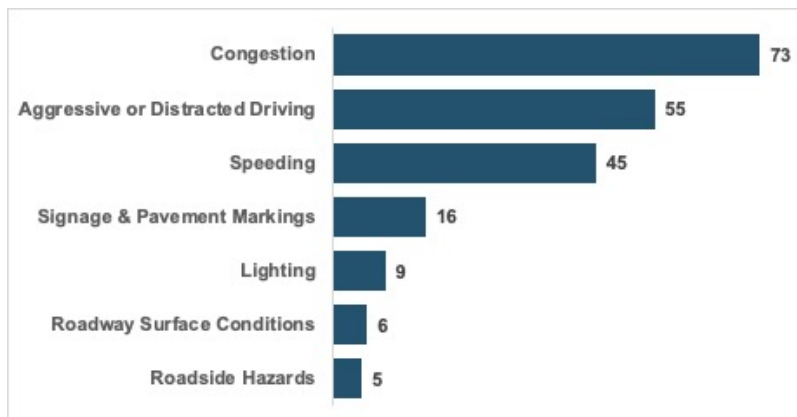
RANDALL ROAD at US ROUTE 20
KANE COUNTY PLANNING AND
ENVIRONMENTAL LINKAGES STUDY



Peak Congestion – *Time*



Peak Congestion – *Direction*



Top Safety Issues

Polling

Based on your experiences, do you agree with the results from the first public meeting survey that indicate congestion is the worst during weekday mornings traveling southbound?

- a. Yes, I agree with both (time and direction)
- b. I agree with the congestion time, but not the direction
- c. I agree with the congestion direction, but not the time
- d. No, I disagree with both (please submit response in Zoom chat)

Share your comments in the Zoom chat or later during tonight's breakout sessions

Polling

Results from the first public meeting survey indicated congestion as the top safety issue within the study area. Do you agree?

- a. Yes
- b. No

Share your comments in the Zoom chat or later during tonight's breakout sessions

Polling

If your response to the last polling question was no, what do you think the is the top safety issue in the study area?

- a. Speeding
- b. Signage/pavement markings
- c. Lighting
- d. Roadway surface conditions
- e. Roadside hazards
- f. Aggressive/distracted driving
- g. Other (please submit response in Zoom chat)

Share your comments in the Zoom chat or later during tonight's breakout sessions



RANDALL ROAD at US ROUTE 20
**KANE COUNTY PLANNING AND
ENVIRONMENTAL LINKAGES STUDY**

Purpose & Need

Purpose & Need Statement



RANDALL ROAD at US ROUTE 20
KANE COUNTY PLANNING AND
ENVIRONMENTAL LINKAGES STUDY

*The purpose of transportation improvements in the study area is to **reduce congestion** on Randall Road and surrounding roads, **enhance area mobility** and **improve safety** for all users.*



Purpose & Need Key Issues



RANDALL ROAD at US ROUTE 20
KANE COUNTY PLANNING AND
ENVIRONMENTAL LINKAGES STUDY



Mobility

- Traffic related congestion
- Over capacity facilities
- Unreliable travel times



Safety

- Congestion related crashes on Randall Road



Roadway Deficiencies

- Substandard horizontal alignment
- Insufficient storage for future traffic merging onto WB US 20
- Insufficient clearance height for the Randall Road bridge over US 20
- Insufficient clearance height for the Larkin Avenue bridge over US 20
- Weaving movements on EB US 20
- Lacks pedestrian and bicycle facilities

Polling

How effectively does the Purpose & Need statement address public input and concerns?

- a. Addresses public input and concerns
- b. Needs work (please submit why in Zoom chat)
- c. Unsure

Share your comments in the Zoom chat or later during tonight's breakout sessions



RANDALL ROAD at US ROUTE 20
**KANE COUNTY PLANNING AND
ENVIRONMENTAL LINKAGES STUDY**

Potential Concepts

Potential Concepts



RANDALL ROAD at US ROUTE 20
KANE COUNTY PLANNING AND
ENVIRONMENTAL LINKAGES STUDY

Low Cost – Partial Improvement

Weld Road Left Lane Extension

Medium Cost – Partial Improvement

Randall Road Add Lanes

Potential Concepts



RANDALL ROAD at US ROUTE 20
KANE COUNTY PLANNING AND
ENVIRONMENTAL LINKAGES STUDY

High Cost – Complete Improvements

Diverging Diamond Interchange

Single Point Urban Interchange

Ovalabout

Echelon

Polling

What potential project benefit do you see as most important?

- a. Bicycle/pedestrian access
- b. Reduction in travel time on Randall Road
- c. Maintaining direct access to hospital/Elgin
- d. Safety improvements
- e. Other (please submit response in Zoom chat)

*Share your comments in the Zoom chat or later
during tonight's breakout sessions*

Concept 1



RANDALL ROAD at US ROUTE 20
KANE COUNTY PLANNING AND
ENVIRONMENTAL LINKAGES STUDY

Weld Road Left Turn Lane Extension

Low Cost – Partial Improvement

Benefits

- Intersection improvement mitigates collision rate, which is currently above state average

Challenges

- Does not address any other safety concerns or congestion issues



Concept 2 – Example



RANDALL ROAD at US ROUTE 20
KANE COUNTY PLANNING AND
ENVIRONMENTAL LINKAGES STUDY

Road Add Lanes

Randall Road (South of I-90) | *Elgin*



4 Road Lanes



6 Road Lanes

Concept 2



RANDALL ROAD at US ROUTE 20
KANE COUNTY PLANNING AND
ENVIRONMENTAL LINKAGES STUDY

Randall Road Add Lanes

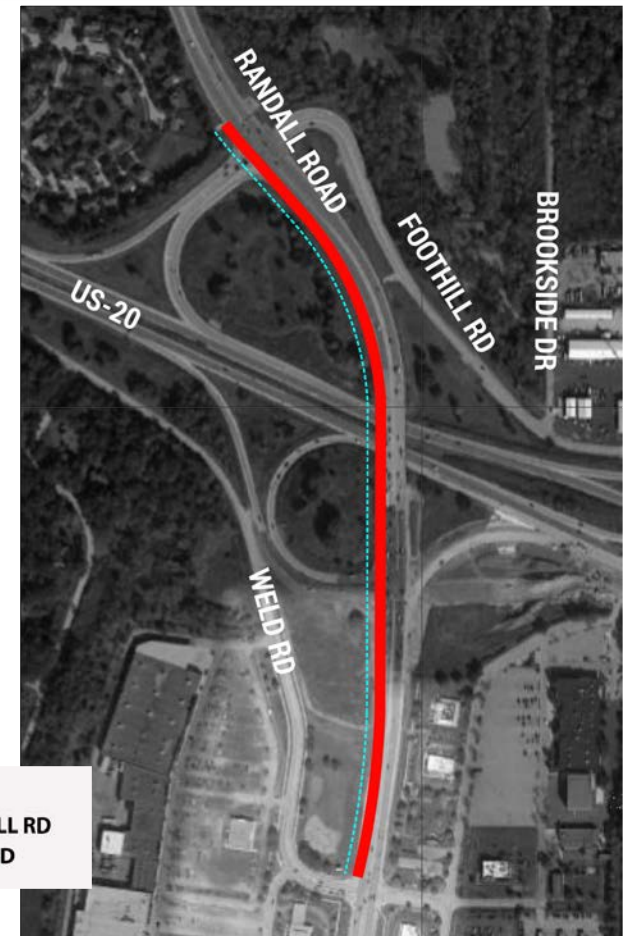
*Medium Cost –
Partial Improvement*

Benefits

- Proposed widening alleviates congestion along Randall Road
- Improvements to traffic signals
- Meets future six lane Randall Road corridor

Challenges

- Does not address safety concerns along US 20
- Does not address congestion along Foothill Road/Larkin Avenue



Concepts 3 & 4 – Example



RANDALL ROAD at US ROUTE 20
KANE COUNTY PLANNING AND
ENVIRONMENTAL LINKAGES STUDY

Diverging Diamond Interchange

IL-59 & I-88 | *Naperville*



Concept 3



RANDALL ROAD at US ROUTE 20
KANE COUNTY PLANNING AND
ENVIRONMENTAL LINKAGES STUDY

Diverging Diamond – US 20 Priority

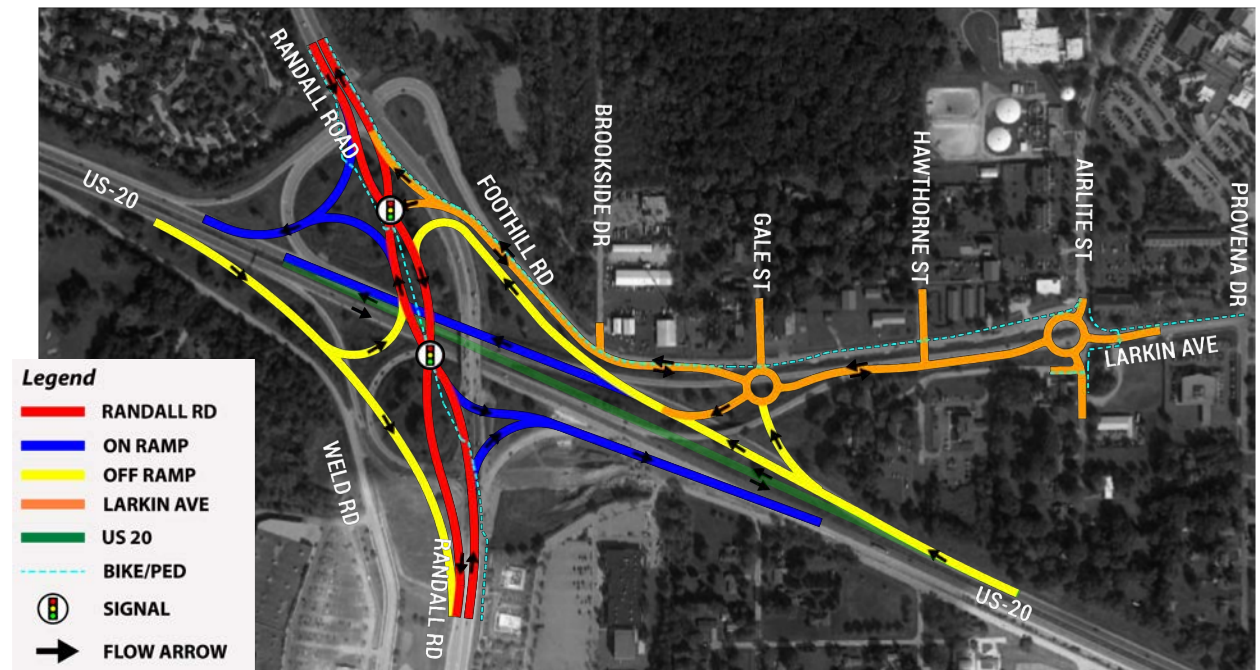
High Cost – Complete Improvement

Benefits

- Free-flow access to US 20, Randall Road and hospital
- Improves operations
- Direct access from WB US 20 to Larkin Avenue/local streets

Challenges

- Initial driver unfamiliarity
- Changes to local access



Concept 4



RANDALL ROAD at US ROUTE 20
KANE COUNTY PLANNING AND
ENVIRONMENTAL LINKAGES STUDY

Diverging Diamond – *Randall Priority*

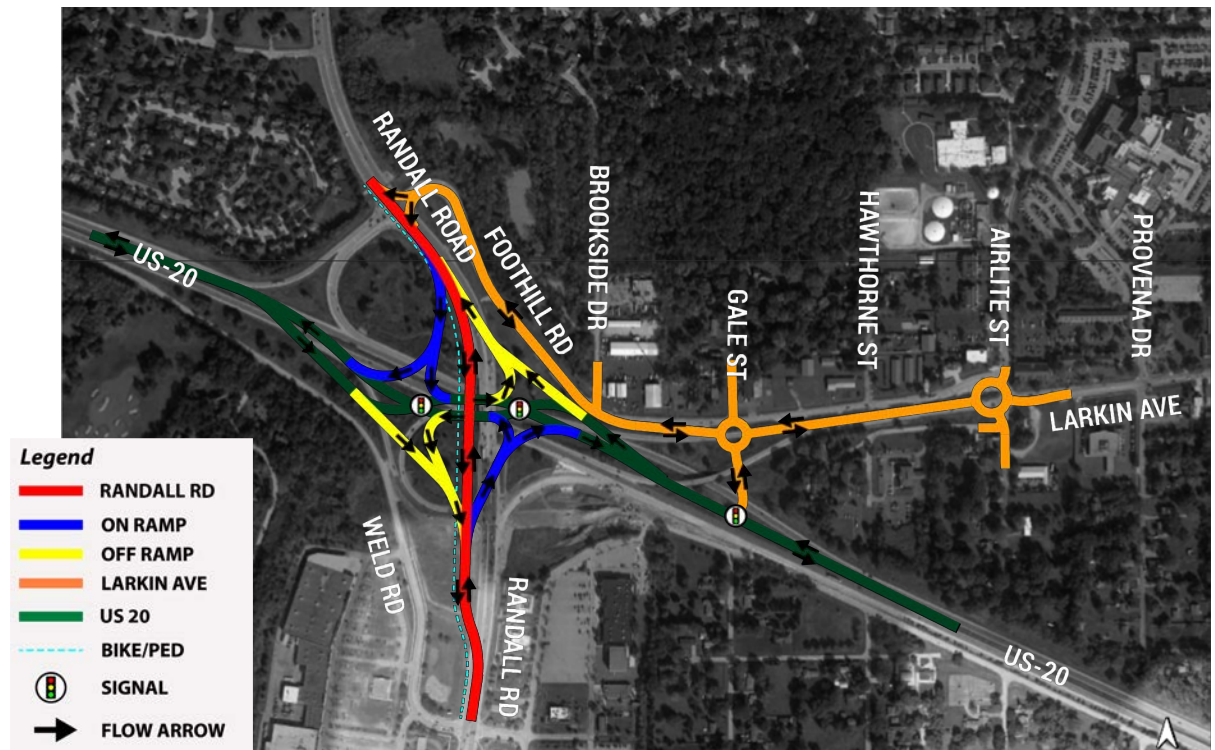
High Cost – Complete Improvement

Benefits

- Free-flow access to US 20, Randall Road and hospital
- Improved traffic operations
- Direct access from WB US 20 to Larkin Avenue/local streets

Challenges

- Initial driver unfamiliarity
- Requires reclassification of US 20
- Changes to local access



Concept 5 – Example



RANDALL ROAD at US ROUTE 20
KANE COUNTY PLANNING AND
ENVIRONMENTAL LINKAGES STUDY

Ovalabout

I-69 at 96th & 116th Street | *Fishers, Indiana*



Concept 5



RANDALL ROAD at US ROUTE 20
KANE COUNTY PLANNING AND
ENVIRONMENTAL LINKAGES STUDY

Ovalabout

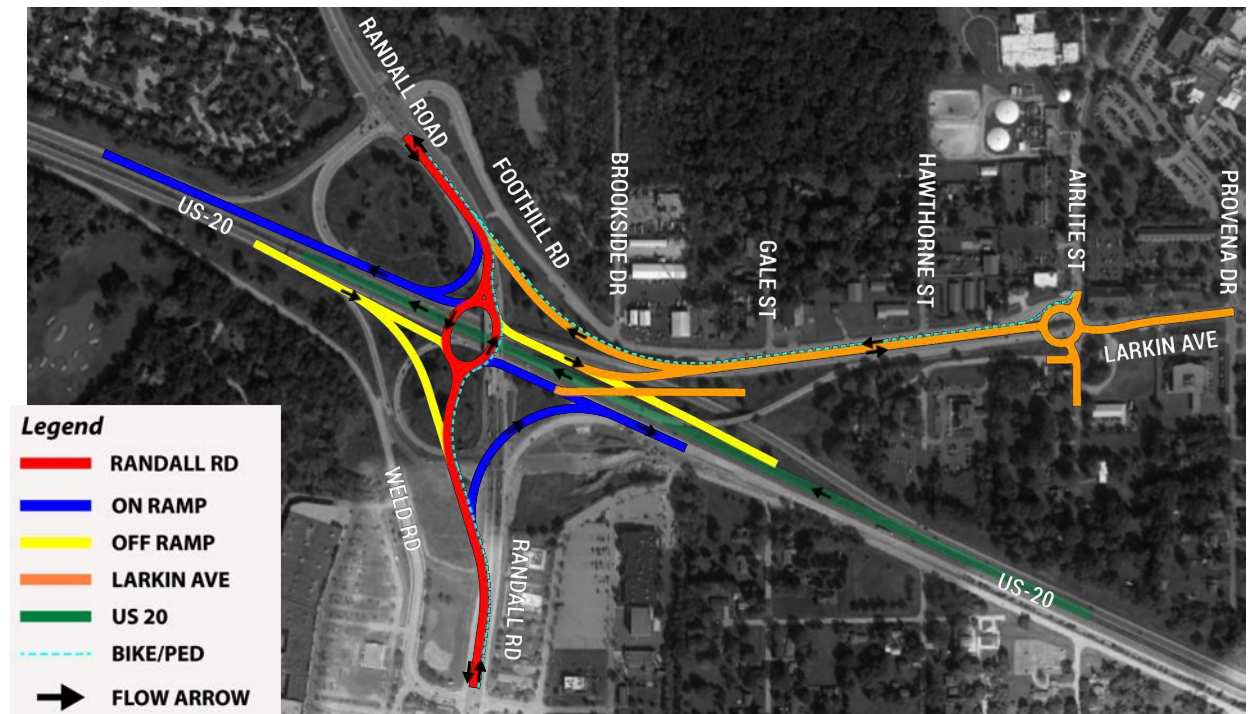
High Cost – Complete Improvement

Benefits

- Eliminates signalized intersections on Randall Road
- More direct access to hospital

Challenges

- Tightening oval radii and weaving lengths
- Initial driver unfamiliarity
- Three small bridge structures versus one large structure
- Changes to local access



Concepts 6 & 7 – Example



RANDALL ROAD at US ROUTE 20
KANE COUNTY PLANNING AND
ENVIRONMENTAL LINKAGES STUDY

Single Point Urban Interchange

US-20 & McLean Boulevard | *Elgin*



Concept 6



RANDALL ROAD at US ROUTE 20
KANE COUNTY PLANNING AND
ENVIRONMENTAL LINKAGES STUDY

Single Point Urban Interchange - US 20 Priority

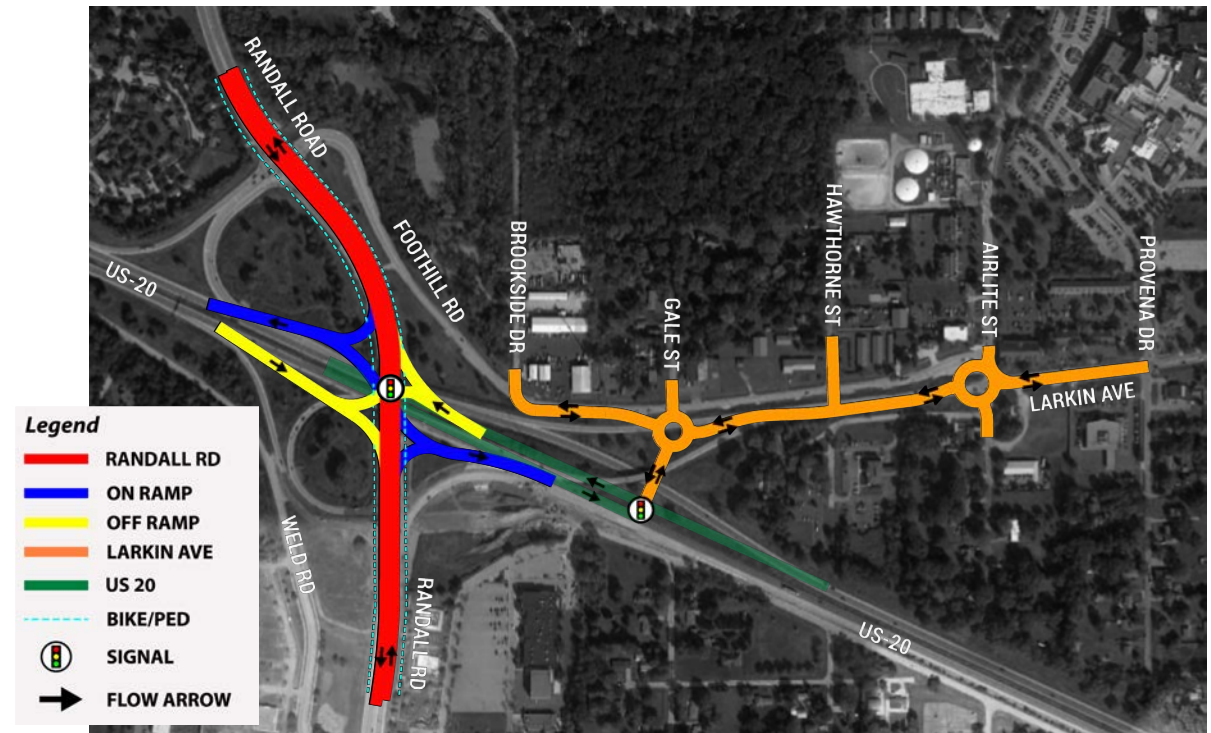
High Cost – Complete Improvement

Benefits

- Complete reconfiguration addresses congestion and safety
- Free flow access is provided onto US 20/Randall Road
- Driver familiarity on Randall Road

Challenges

- Potential for less efficient signal operations



Concept 7



RANDALL ROAD at US ROUTE 20
KANE COUNTY PLANNING AND
ENVIRONMENTAL LINKAGES STUDY

Single Point Urban Interchange - *Randall Priority*

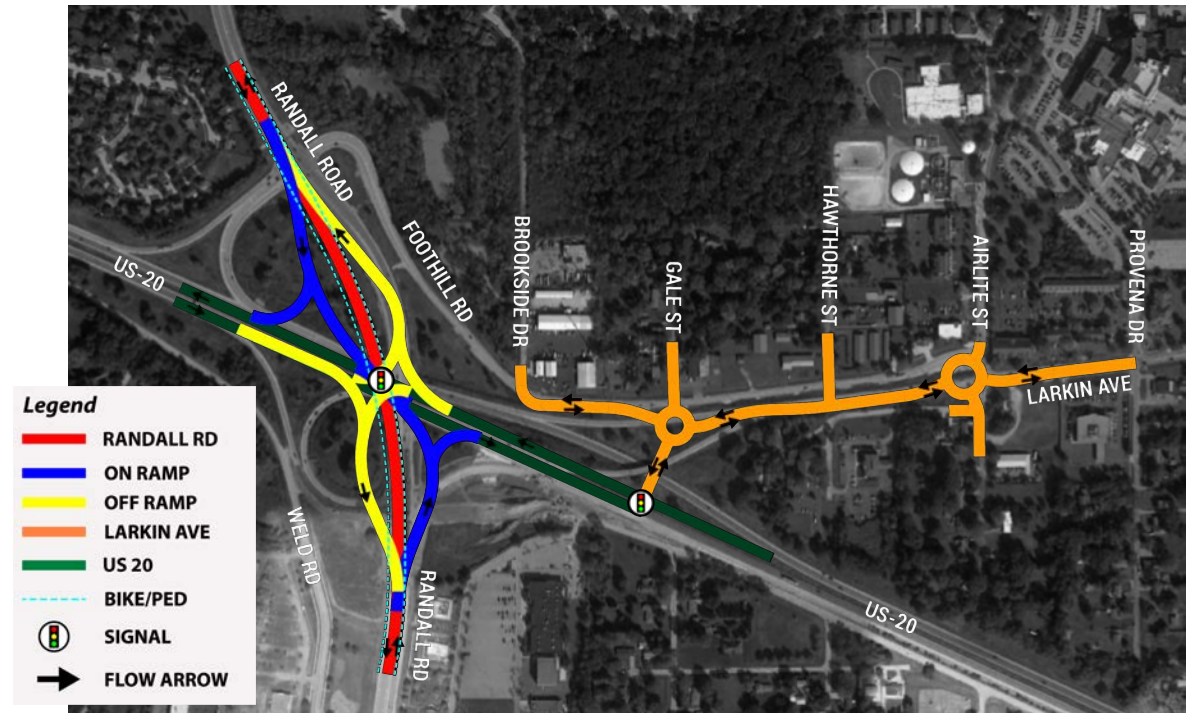
High Cost – Complete Improvement

Benefits

- Complete reconfiguration addresses congestion and safety
- Free flow access is provided onto US 20/Randall Road
- Driver familiarity on Randall Road

Challenges

- Potential for less efficient signal operations
- Requires reclassification of US 20



Concept 8 – Example



RANDALL ROAD at US ROUTE 20
KANE COUNTY PLANNING AND
ENVIRONMENTAL LINKAGES STUDY

Echelon



Concept 8



RANDALL ROAD at US ROUTE 20
KANE COUNTY PLANNING AND
ENVIRONMENTAL LINKAGES STUDY

Echelon

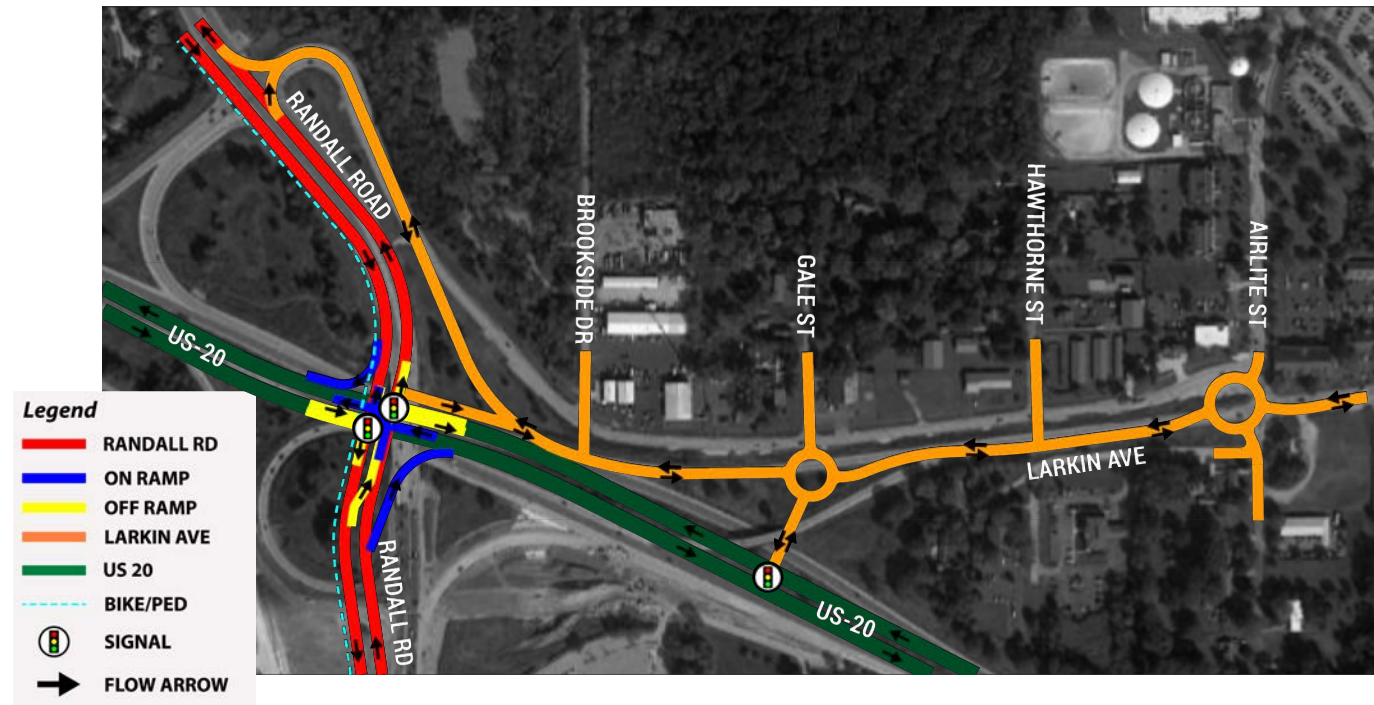
High Cost – Complete Improvement

Benefits

- Higher capacity than at-grade interchange
- Lower travel times than at-grade interchange
- Smaller structure to maintain

Challenges

- Initial driver unfamiliarity



Polling

Overall, do you feel that the developed concepts reflect your input and concerns?

- a. Yes, my input and concerns have been addressed
- b. Concepts need to be further refined (please submit why in Zoom chat)
- c. No, my input and concerns have not been addressed (please submit why in Zoom chat)

Share your comments in the Zoom chat or later during tonight's breakout sessions

Polling

What challenge do you see as the biggest concern for the project?

- a. Ability to improve congestion and safety
- b. Initial driver unfamiliarity
- c. Constructability
- d. Project cost
- e. Impacts to direct access to hospital/Elgin
- f. Other (please submit response in Zoom chat)

Share your comments in the Zoom chat or later during tonight's breakout sessions



RANDALL ROAD at US ROUTE 20
KANE COUNTY PLANNING AND ENVIRONMENTAL LINKAGES STUDY

Breakout Sessions



Breakout Rooms



Reactions

- > **Complete Concepts – Room 1**
- > **Complete Concepts – Room 2**



RANDALL ROAD at US ROUTE 20
**KANE COUNTY PLANNING AND
ENVIRONMENTAL LINKAGES STUDY**

Breakout Sessions Recap

Next Steps



RANDALL ROAD at US ROUTE 20
KANE COUNTY PLANNING AND
ENVIRONMENTAL LINKAGES STUDY

Additional Concepts Evaluation

- Traffic operations
- Environmental impacts
- ROW impacts
- Constructability
- Funding opportunities

Develop Reasonable Alternatives

PEL Document – Early Summer 2022



THANK YOU!



RANDALL ROAD at US ROUTE 20
KANE COUNTY PLANNING AND
ENVIRONMENTAL LINKAGES STUDY

Jennifer O'Connell

occonnelljennifer@co.kane.il.us

kdot.countyofkane.org