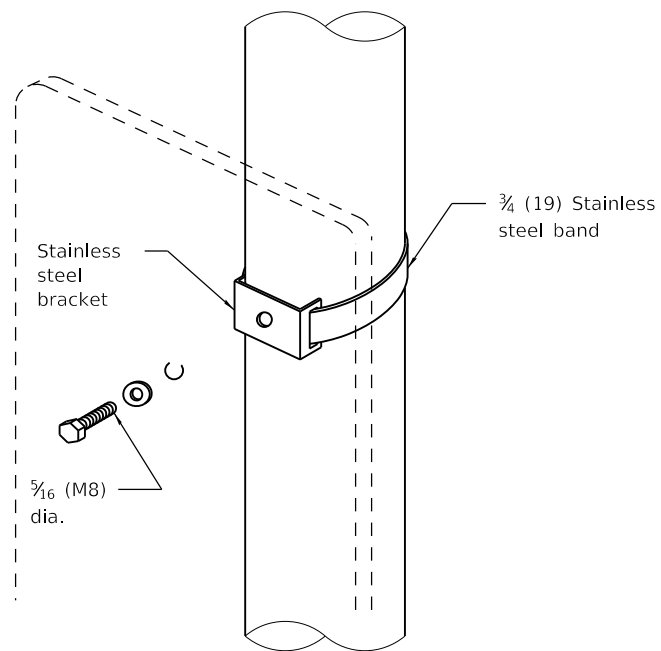
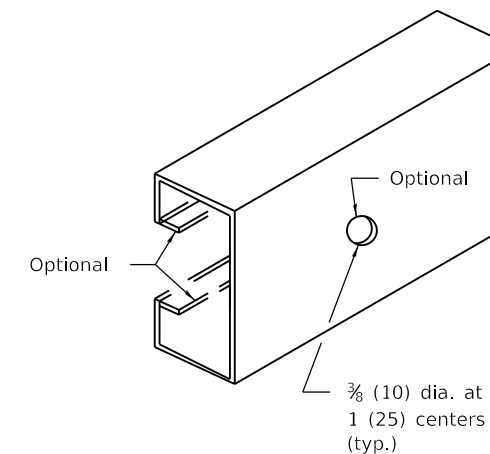
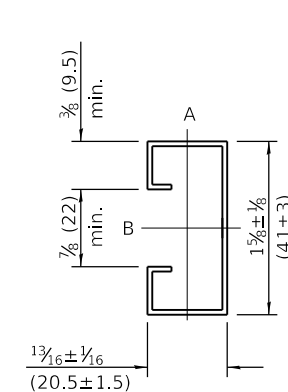


Sign panel 36 (900) wide or less

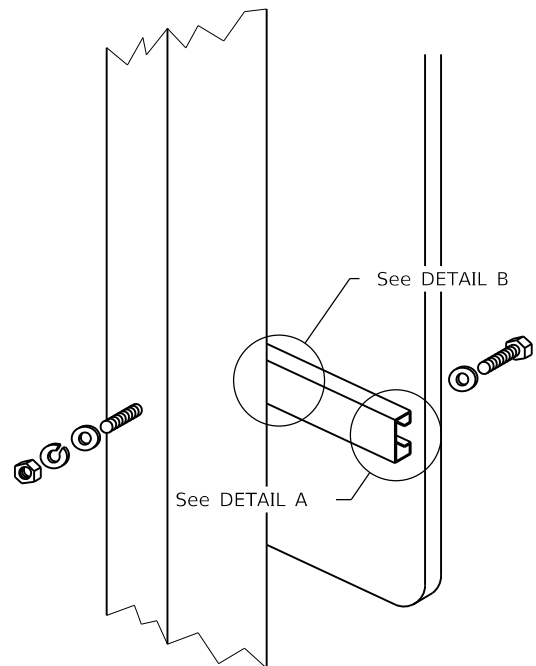


Sign panel 36 (900) wide or less

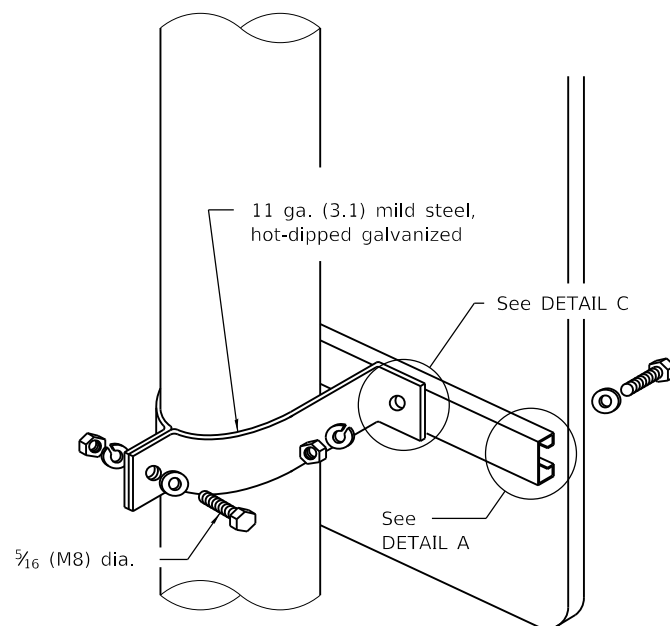
Section modulus (minimum)	Axis A	Axis B
Steel	0.050 in. ³ (819 mm ³)	0.105 in. ³ (1720 mm ³)
Aluminum	0.150 in. ³ (2458 mm ³)	0.315 in. ³ (5162 mm ³)



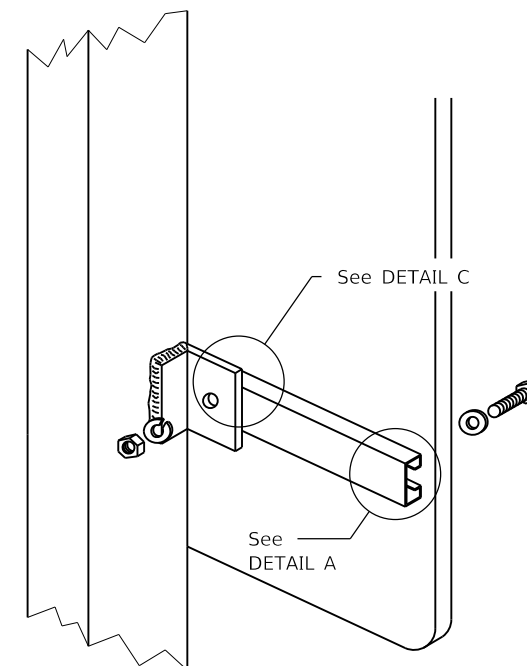
SUPPORTING CHANNEL DETAILS



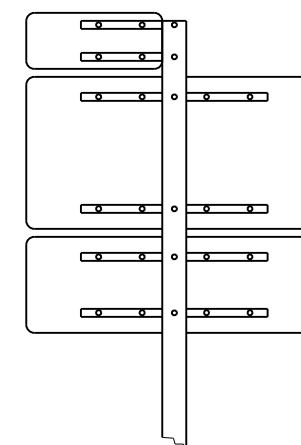
Sign panel over 36 (900) wide



Sign panel over 36 (900) wide



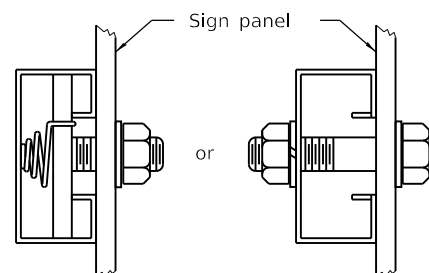
ROUTE MARKER ASSEMBLY



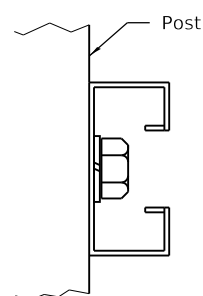
WOOD OR TELESCOPING STEEL POSTS

LIGHT OR SIGNAL STANDARDS

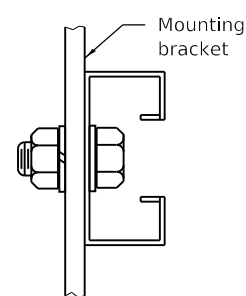
BREAKAWAY STEEL TUBING POSTS
(All sign panel sizes)



DETAIL A



DETAIL B



DETAIL C

All dimensions are in inches (millimeters) unless otherwise shown.

DATE	REVISIONS
1-1-09	Switched units to English (metric).
1-1-97	Renum. Standard 2319-6.

SIGN PANEL MOUNTING DETAILS

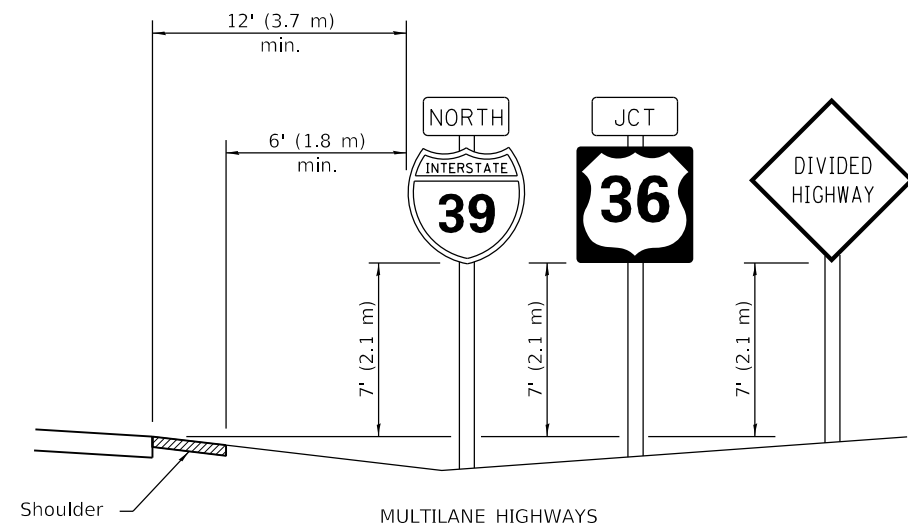
STANDARD 720001-01

Illinois Department of Transportation

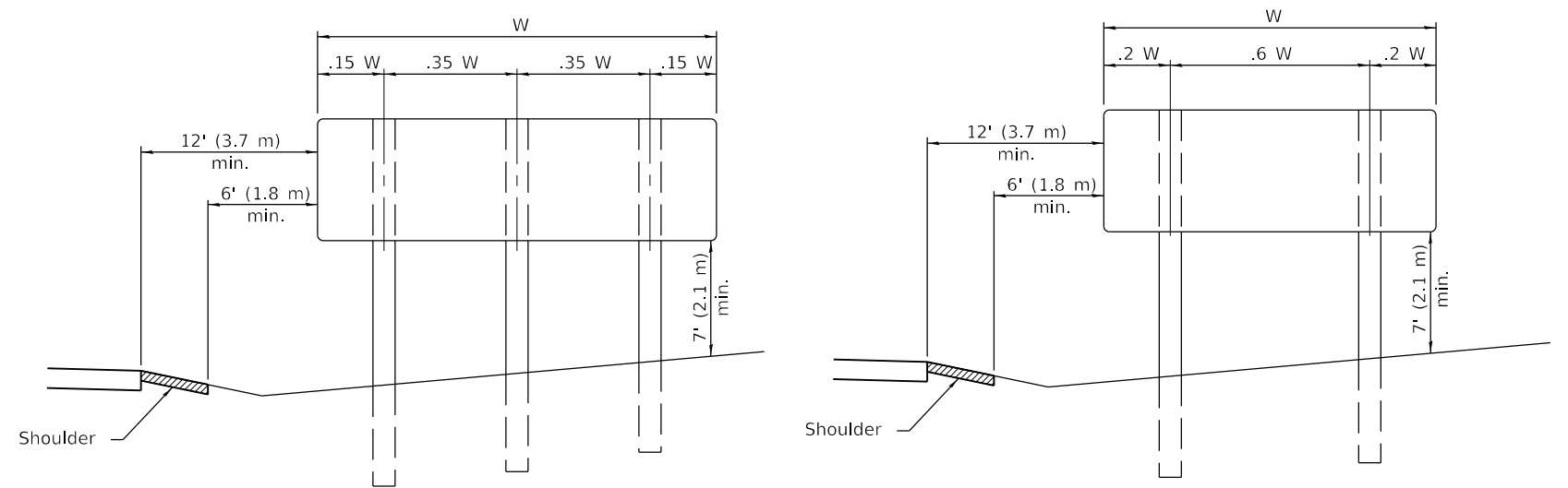
PASSED January 1, 2009
[Signature]
 ENGINEER OF OPERATIONS

APPROVED January 1, 2009
[Signature]
 ENGINEER OF DESIGN AND ENVIRONMENT

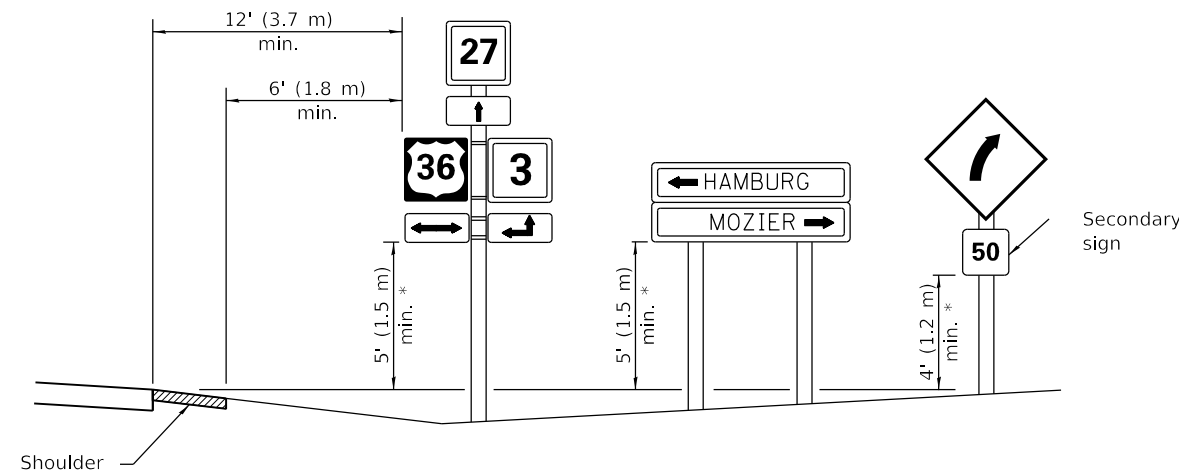
ISSUED 1-1-97



MULTILANE HIGHWAYS

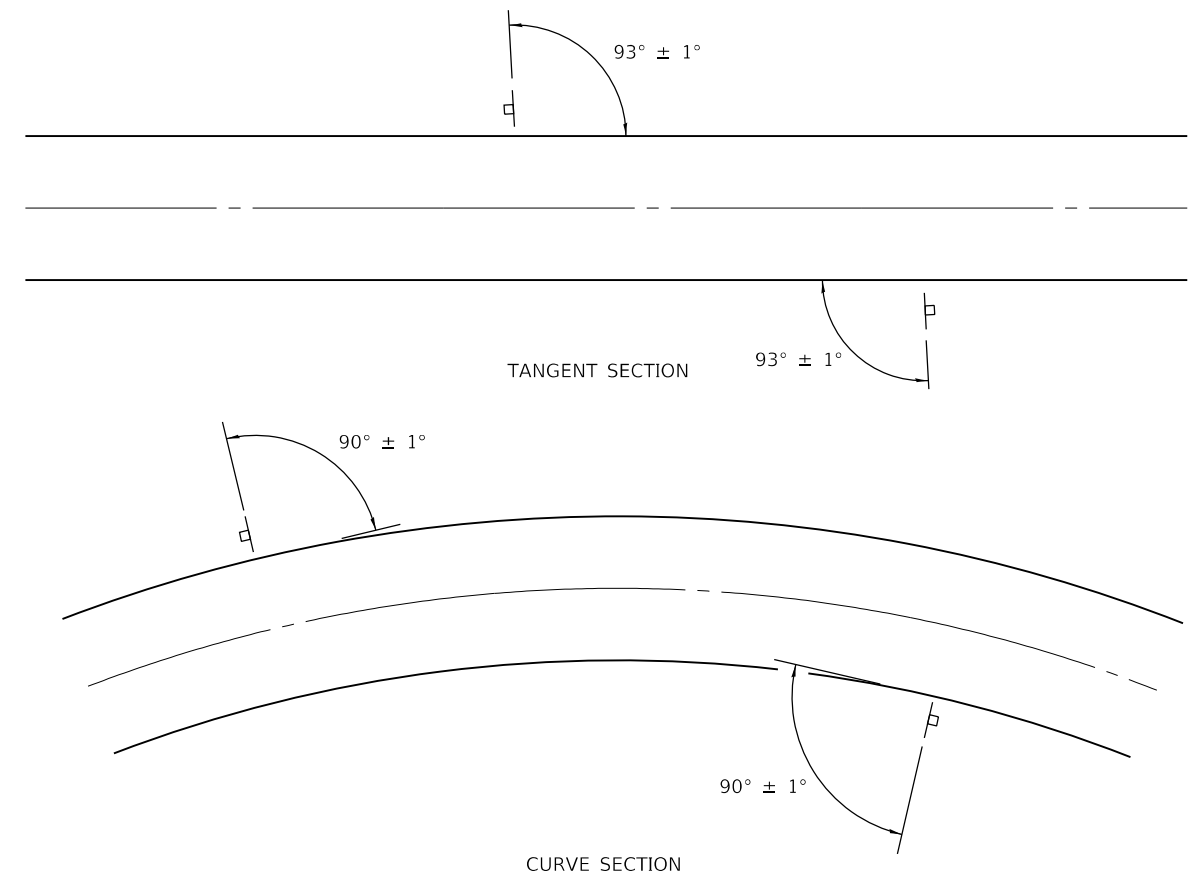


POST SPACING FOR NON-FREEWAY SIGN PANELS

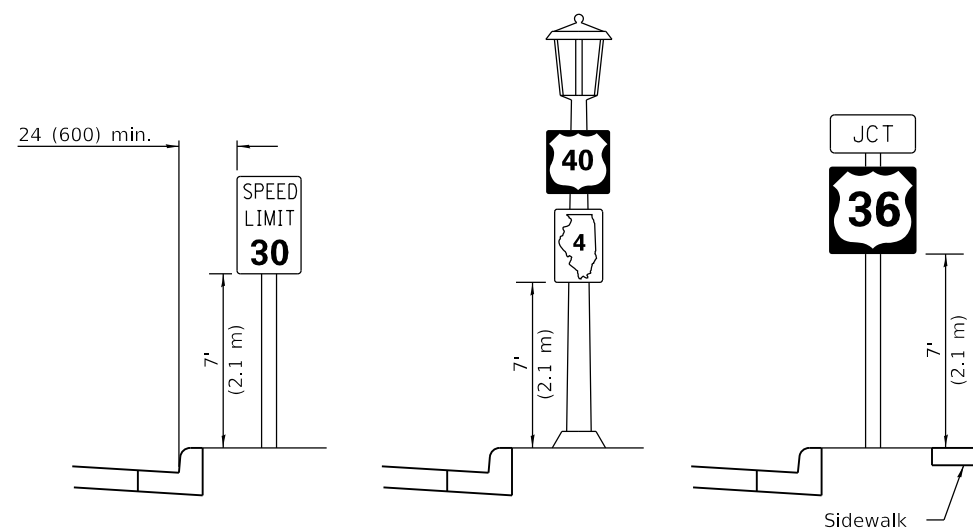


* In any area where parking is likely to occur or where there are obstructions to view or where signs are located over sidewalks, the height shall be at least 7' (2.1 m).

TWO LANE RURAL HIGHWAYS



GROUND MOUNT SIGN POSITIONING



URBAN LOCATIONS

TYPICAL INSTALLATIONS

Signs in any area shall be erected to a uniform height above the edge of the pavement.

All dimensions are in inches (millimeters) unless otherwise shown.

Illinois Department of Transportation

PASSED January 1, 2014
Justin Mann
 ENGINEER OF OPERATIONS

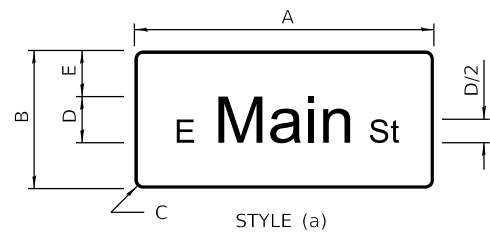
APPROVED January 1, 2014
[Signature]
 ENGINEER OF DESIGN AND ENVIRONMENT

ISSUED 1-1-97

DATE	REVISIONS
1-1-14	Added shoulders and slopes.
	Changed sign distances from roadway and shoulder.
1-1-12	Rev. sign elev. for multilane hwy's. Revised sign elev. and dist. to curb for rural loc.

**SIGN PANEL
ERECTION DETAILS**

STANDARD 720006-04



STYLE (a)



STYLE (b)



STYLE (c)



STYLE (d)



STYLE (e)



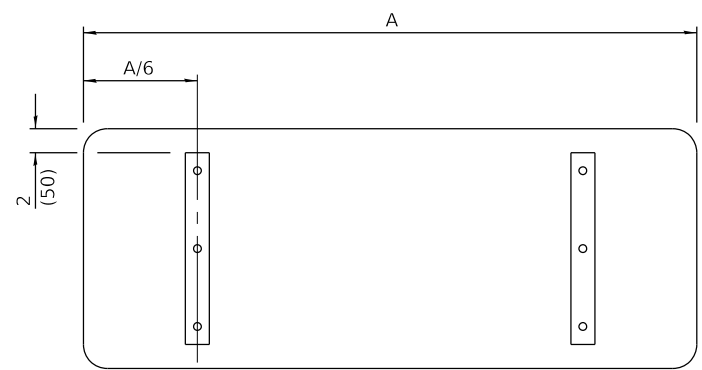
STYLE (f)

When road classification only is on the second line, it should not be abbreviated.

TYPICAL SIGN STYLES

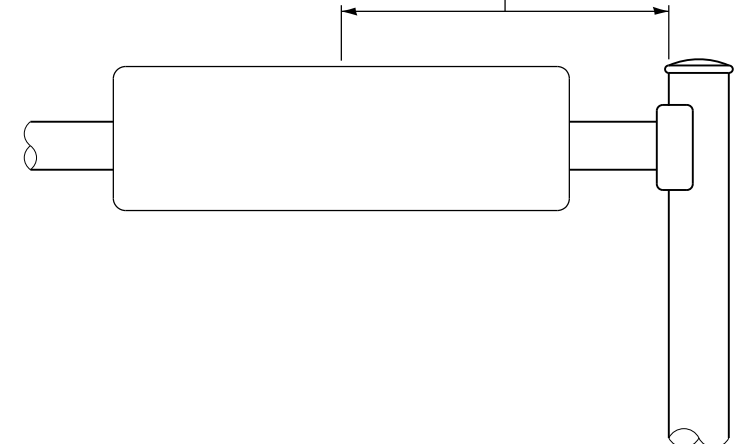
SIGN STYLE	DIMENSIONS								LETTER SIZE UC/LC PRIMARY			BORDER
	A	B	C	D	E	F	G	H	1	2	*	
a,b,d	Var.	12 (300)	1½ (40)	6 (150)	3 (75)	-	-	-	6/4½ (150/115)	-	-	⅜ (10)
	Var.	18 (450)	1½ (40)	8 (200)	5 (125)	-	-	-	8/6 (200/150)	-	-	⅝ (15)
	Var.	24 (600)	1½ (40)	10 (250)	7 (175)	-	-	-	10/7½ (250/190)	-	-	⅝ (15)
	Var.	30 (750)	1½ (45)	12 (300)	9 (225)	-	-	-	12/9 (400/300)	-	-	¾ (20)
c,e	Var.	24 (600)	1½ (40)	6 (150)	-	-	5½ (140)	4 (100)	6/4½ (150/115)	-	3 (75)	⅝ (15)
	Var.	30 (750)	1½ (45)	8 (200)	-	-	7 (175)	4½ (115)	8/6 (200/150)	-	4 (100)	¾ (20)
	Var.	36 (900)	2¼ (60)	10 (250)	-	-	7½ (190)	6 (150)	10/7½ (250/190)	-	5 (125)	¾ (20)
	Var.	42 (1050)	3 (75)	12 (300)	-	-	8½ (215)	7 (175)	12/9 (400/300)	-	6 (150)	1 (25)
f	Var.	24 (600)	1½ (40)	6 (150)	4 (100)	4 (100)	-	-	6/4½ (150/115)	6/4½ (150/115)	-	⅝ (15)
	Var.	30 (750)	1½ (45)	8 (200)	4½ (115)	5 (125)	-	-	8/6 (200/150)	8/6 (200/150)	-	¾ (20)
	Var.	42 (1050)	3 (75)	10 (250)	7½ (190)	7 (175)	-	-	10/7½ (250/190)	10/7½ (250/190)	-	1 (25)
	Var.	48 (1200)	3 (75)	12 (300)	7½ (190)	8 (200)	-	-	12/9 (400/300)	12/9 (400/300)	-	1 (25)

* Supplemental Messages



SUPPORTING CHANNELS

8' (2.4 m) max. for mastarms 16' (4.9 m) through 55' (16.8 m), 18' (5.5 m) max. for mastarms 56' (17.1 m) through 75' (22.9 m) to mid-point of sign panel or blankout sign.



MOUNTING LOCATION

GENERAL NOTES

All signs shall have a white reflectorized legend and border on a green reflectorized background.
The sign panels shall be mounted as shown on Standard 720001 or as specified in the plans.
All dimensions are in inches (millimeters) unless otherwise shown.

DATE	REVISIONS
1-1-18	Revised MOUNTING LOCATION detail.
1-1-12	Revised table and lettering to upper/lower case per current MUTCD.

MAST ARM MOUNTED STREET NAME SIGNS

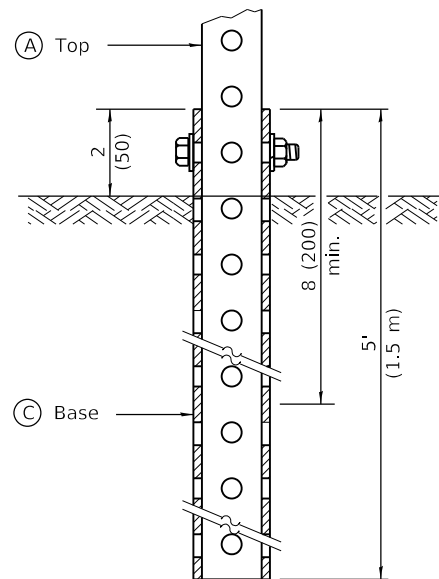
STANDARD 720016-04

Illinois Department of Transportation

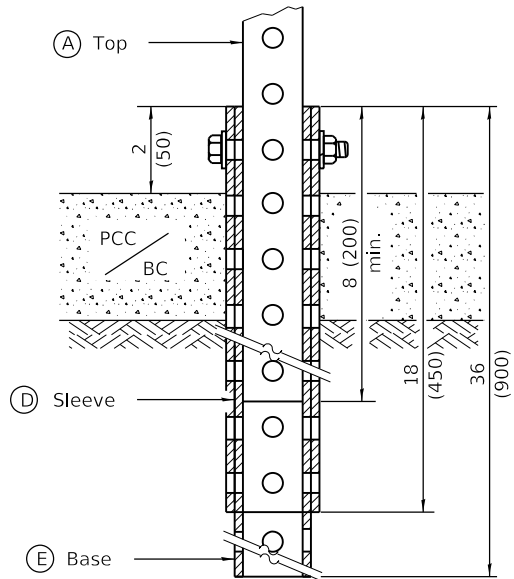
PASSED January 1, 2018
Amy Allen
 ENGINEER OF OPERATIONS

APPROVED January 1, 2018
[Signature]
 ENGINEER OF DESIGN AND ENVIRONMENT

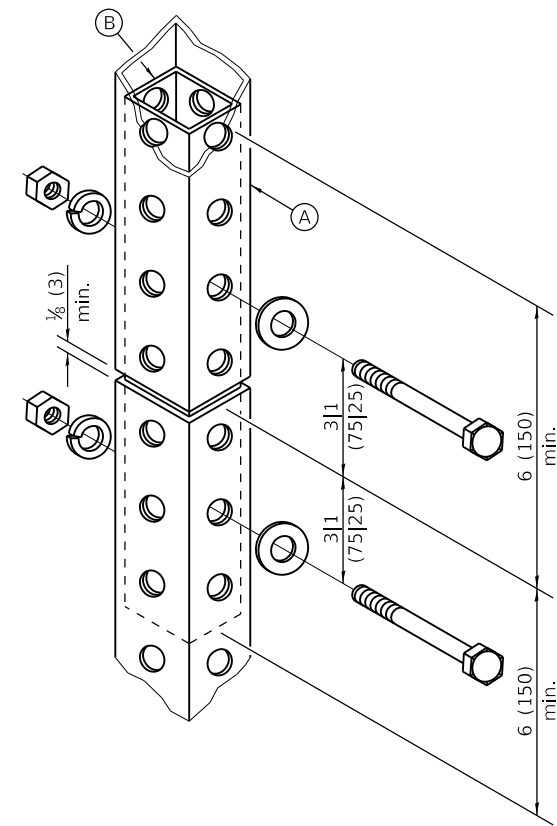
ISSUED 1-1-97



GROUND MOUNT DETAIL



PAVEMENT MOUNT DETAIL



SPLICE DETAIL

(A)	2 x 2 x var. (51 x 51 var.)
(B)	1 3/4 x 1 3/4 x 12 (44 x 44 x 300)
(C)	2 1/4 x 2 1/4 x 60 (57 x 57 x 1500)
(D)	2 1/2 x 2 1/2 x 18 (64 x 64 x 450)
(E)	2 1/4 x 2 1/4 x 36 (57 x 57 x 900)

GENERAL NOTES

All bolts 3/8" (M10) hex head zinc or cadmium plated.

All dimensions are in inches (millimeters) unless otherwise shown.

DATE	REVISIONS
1-1-09	Switched units to English (metric).
1-1-07	New Standard. Used to be part of Standard 720006.

TELESCOPING STEEL SIGN SUPPORT

STANDARD 728001-01

Illinois Department of Transportation

PASSED January 1, 2009

ENGINEER OF OPERATIONS

APPROVED January 1, 2009

ENGINEER OF DESIGN AND ENVIRONMENT

ISSUED 1-1-07