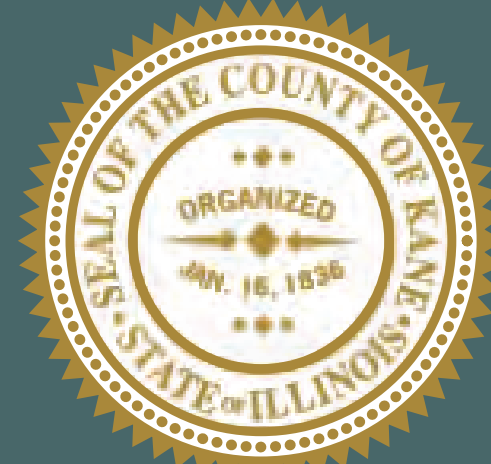
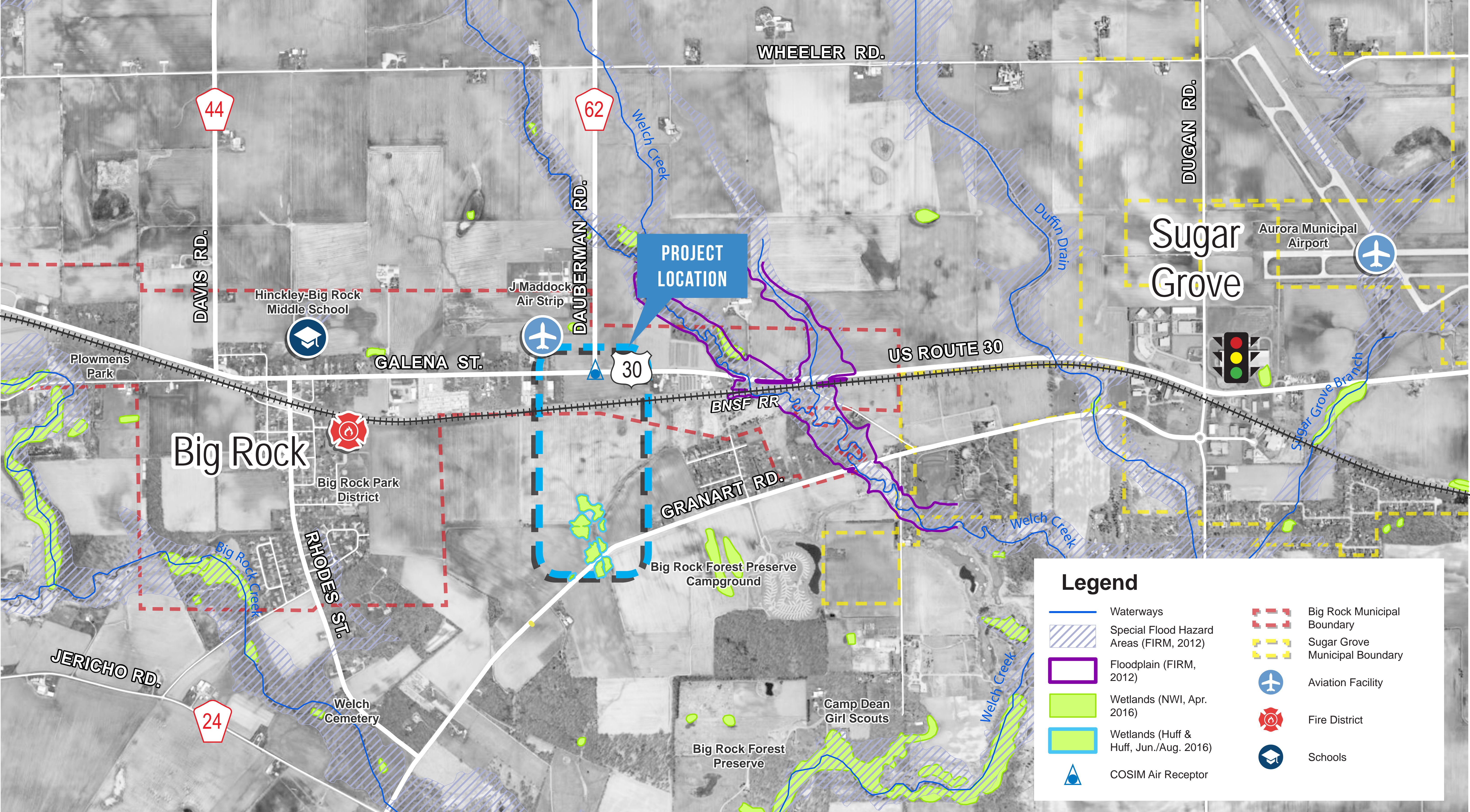


DAUBERMAN ROAD EXTENSION | ROAD CLASSIFICATION WITH EXISTING ADT

Kane County, Illinois



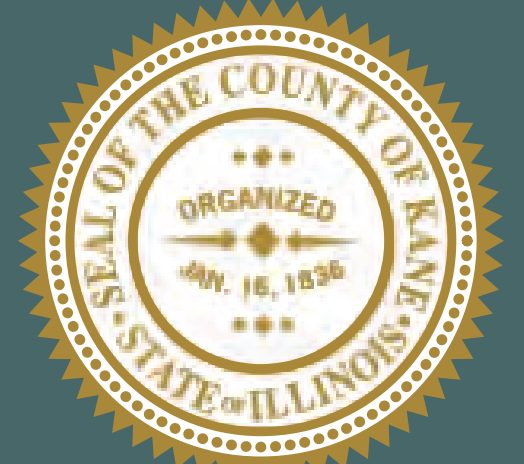
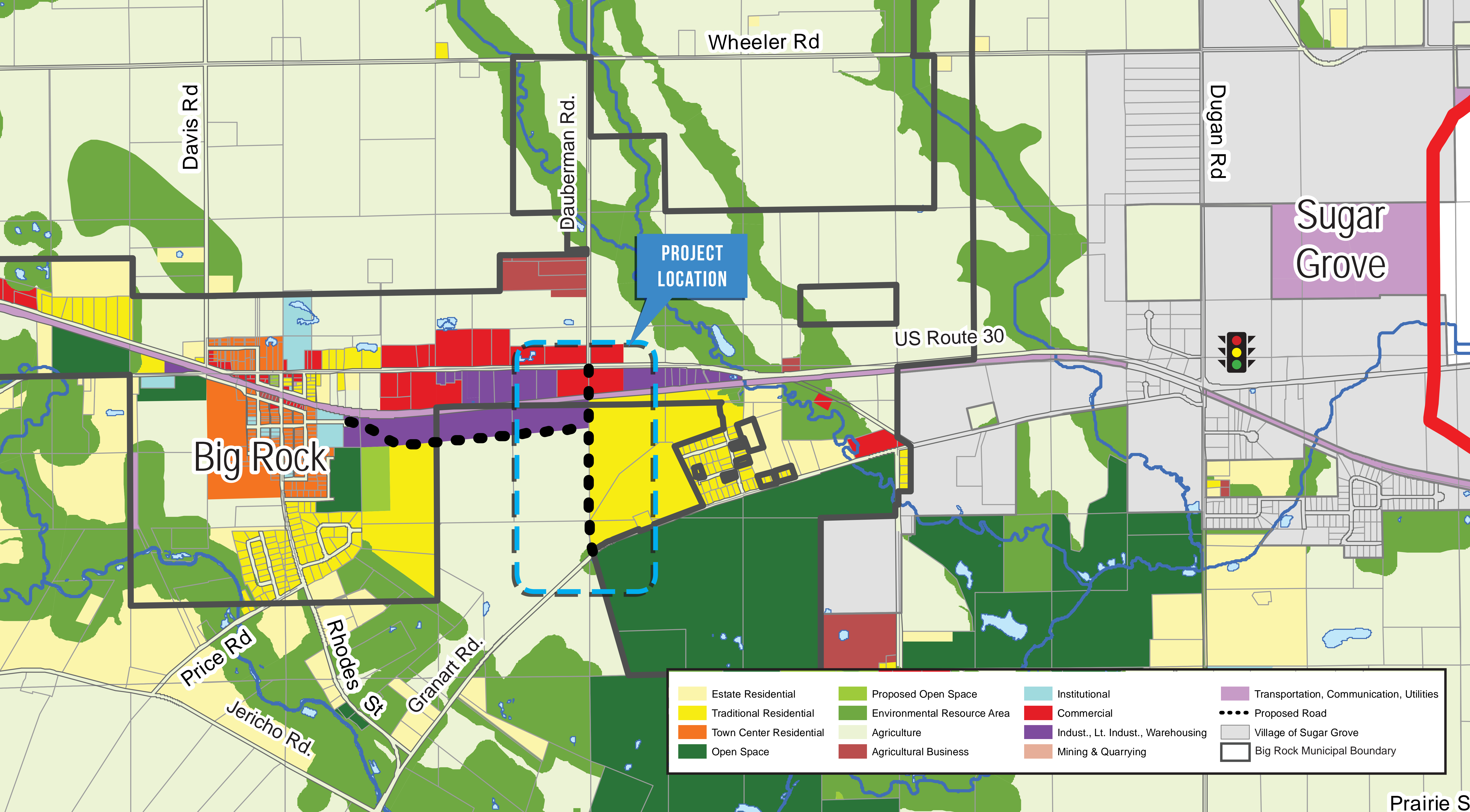
Not to Scale



DAUBERMAN ROAD EXTENSION | ENVIRONMENTAL RESOURCES

Kane County, Illinois





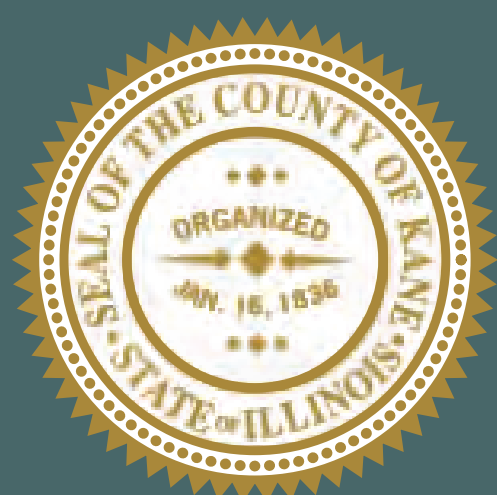
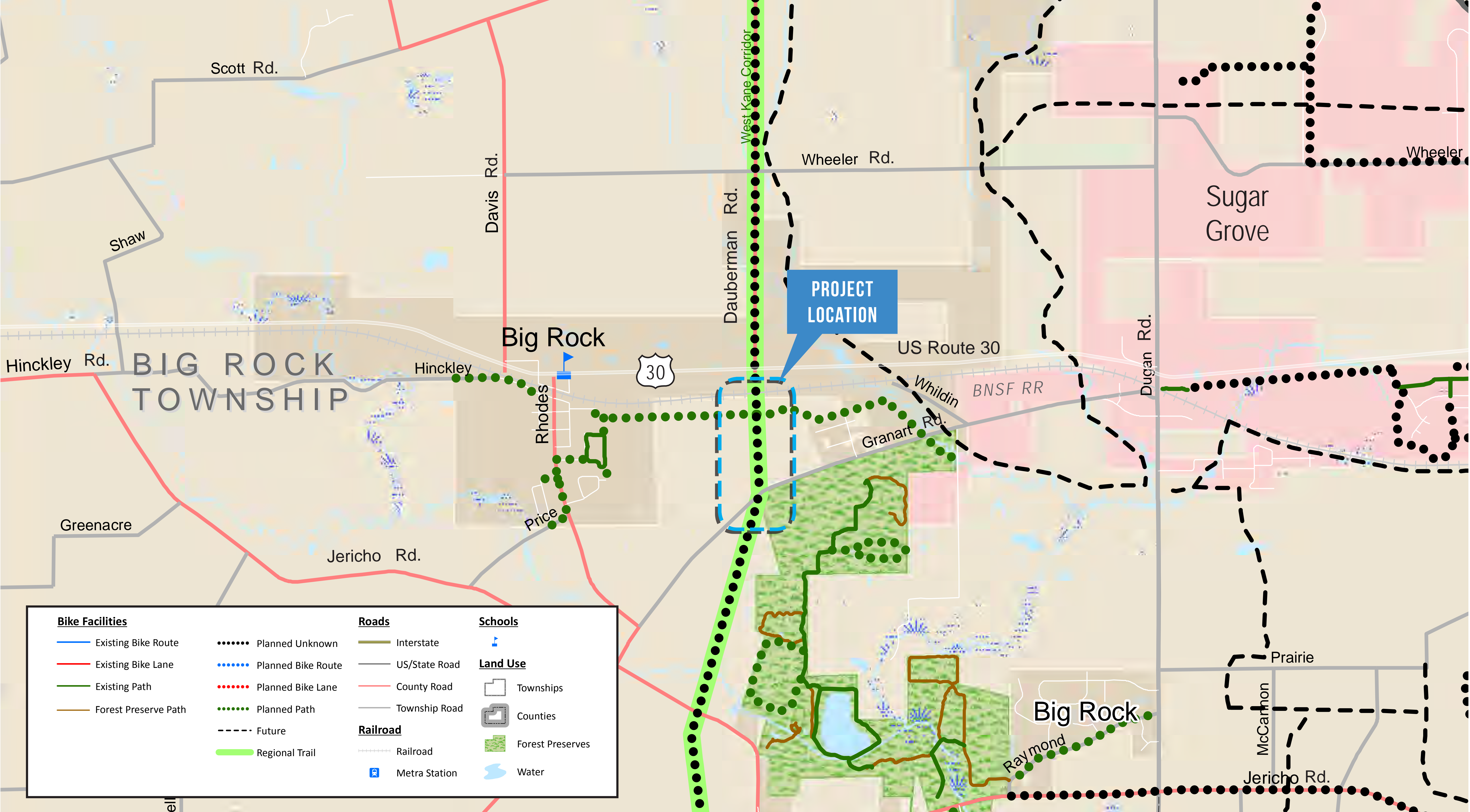
DAUBERMAN ROAD EXTENSION | FUTURE LAND USE

Kane County, Illinois

(Village of Big Rock Comprehensive Plan - 2014)



Not to Scale



DAUBERMAN ROAD EXTENSION |

Kane County, Illinois

BIKE LANES & PATHS

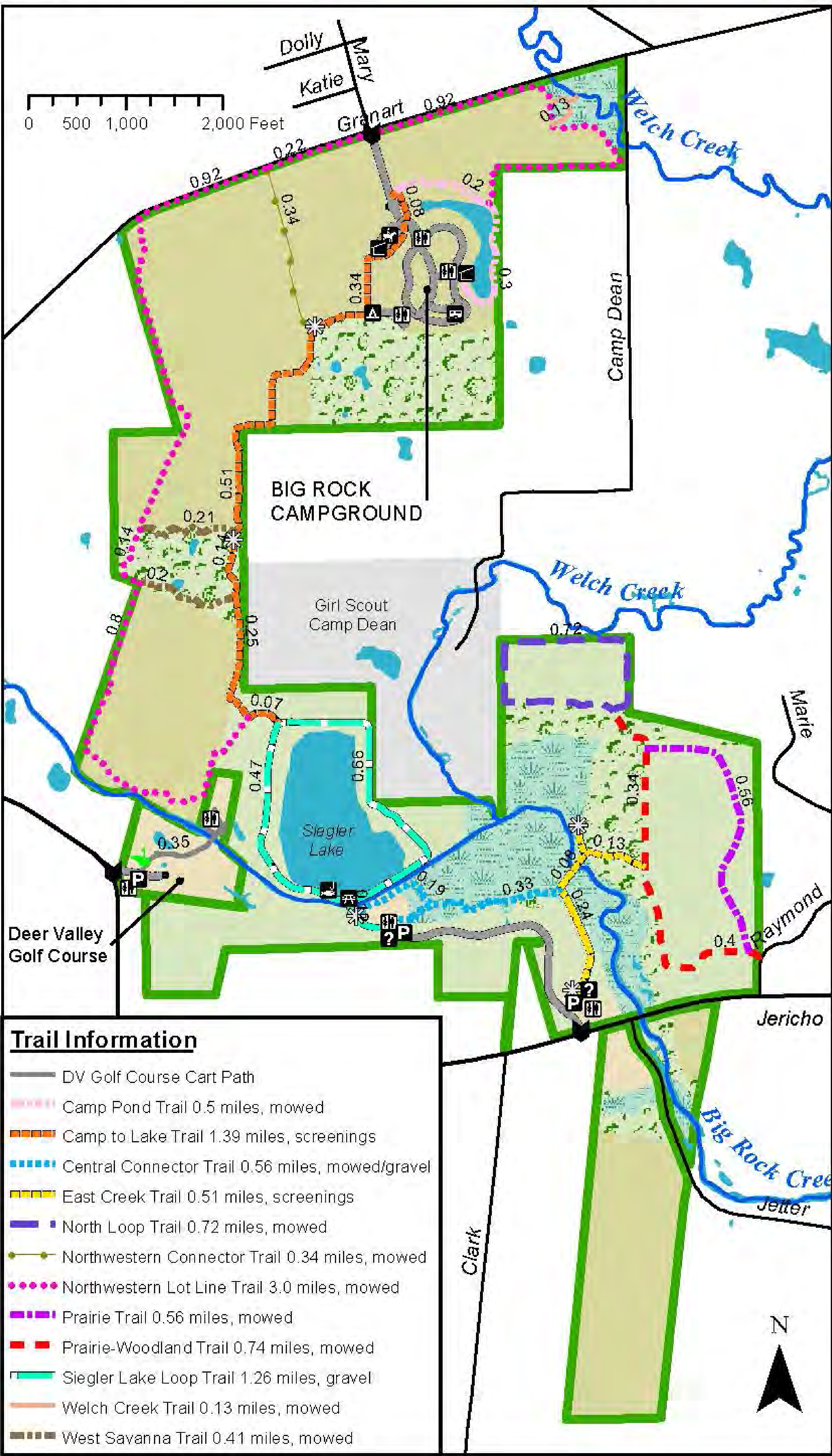
(2015 Kane/Kendall County Planning Map - DRAFT)



Not to Scale



Big Rock Forest Preserve



Legend	
	Main Entrance
	Information
	Parking
	Shelter
	Picnic Area
	Restroom
	RV Campground
	Tent Campground
	Equestrian Campground
	Fishing
	Golf
	Interpretive Sign
	Road
	Forest Preserve Road
	Creek
	Forest Preserve
Natural Area -	
	Cropland
	Grassland
	Maintained
	Open Water
	Wetland
	Woodland

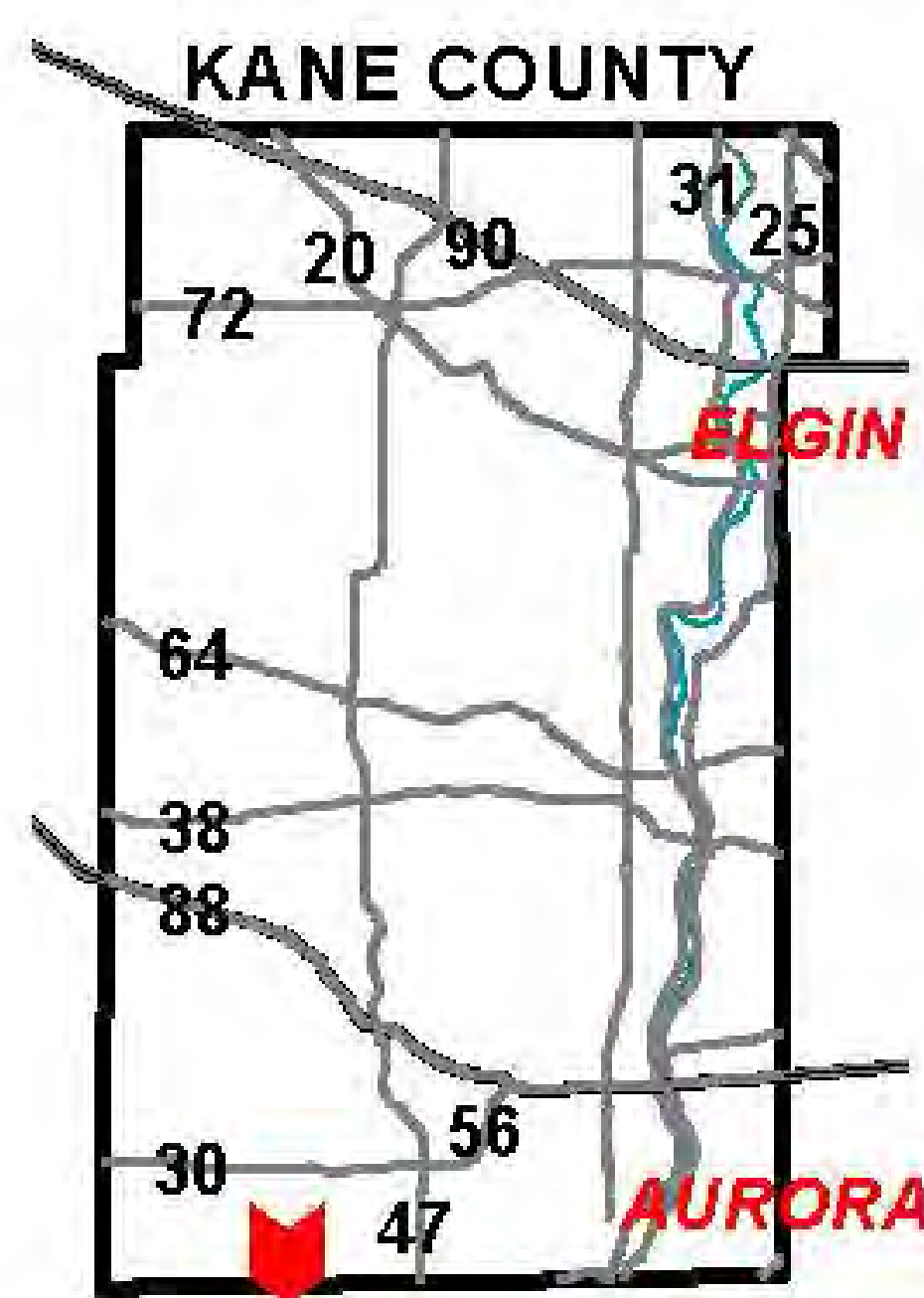
Preserve Main Entrance:
46W072 Jericho Road,
Big Rock, IL 60511
Approx. 3.54 miles west
of IL Route 47

Campground:
46W499 Granart Road,
Big Rock, IL 60511

Acreage = 840
Total trail miles = 10.12

Information: (630) 232-5980
www.kaneforest.com
Hours: Daily, Sunrise-Sunset

Trail Information	
	DV Golf Course Cart Path
	Camp Pond Trail 0.5 miles, mowed
	Camp to Lake Trail 1.39 miles, screenings
	Central Connector Trail 0.56 miles, mowed/gravel
	East Creek Trail 0.51 miles, screenings
	North Loop Trail 0.72 miles, mowed
	Northwestern Connector Trail 0.34 miles, mowed
	Northwestern Lot Line Trail 3.0 miles, mowed
	Prairie Trail 0.56 miles, mowed
	Prairie-Woodland Trail 0.74 miles, mowed
	Siegler Lake Loop Trail 1.26 miles, gravel
	Welch Creek Trail 0.13 miles, mowed
	West Savanna Trail 0.41 miles, mowed



1/6/17

